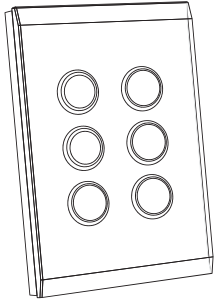


SpaceLogic C-Bus Saturn Wall Plates



508x E508x

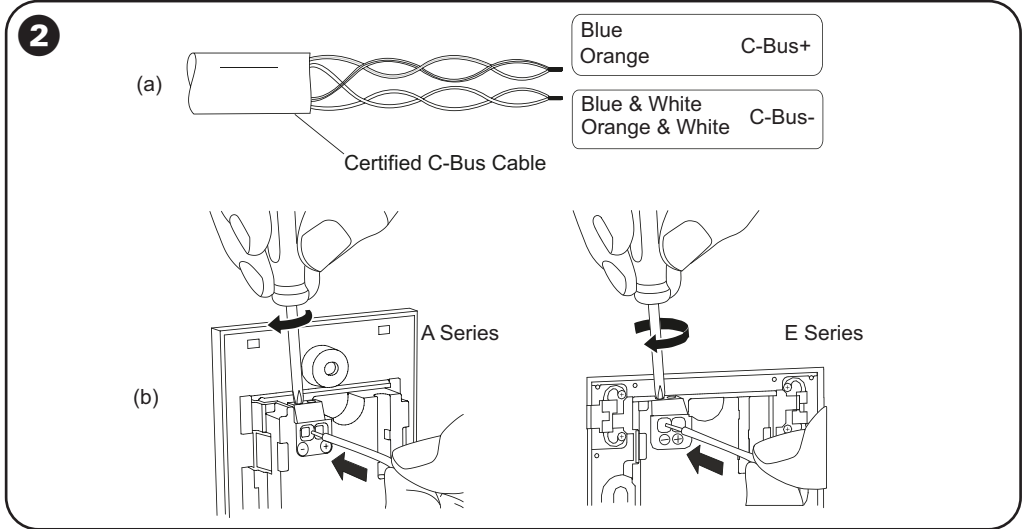
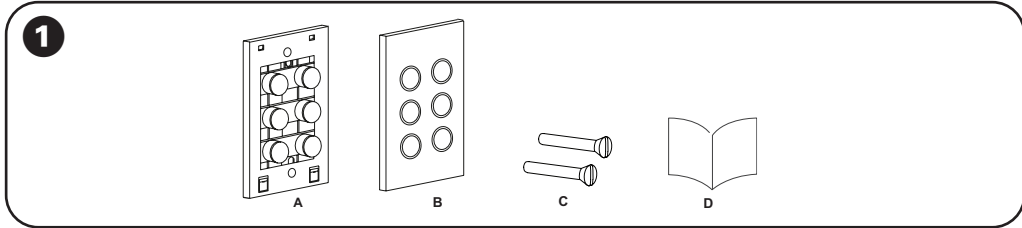
Introduction

The SpaceLogic C-Bus is a lighting control and building automation system that controls and automates lighting and other electrical systems in a commercial or residential building.

SpaceLogic C-Bus Saturn wall plates are available with 2, 4 and 6 keys, which can be programmed to perform various functions, including on/off switch, dimmer control, timer and many other customisable options.

Saturn wall plates have indicators equipped with RGB LEDs, where each indicator can be configured independently.

The wall plates have integrated temperature and humidity sensors, enabling temperature and humidity information via the C-Bus Measurement Application.



Product Range

Catalog Number	Description
5082*	C-Bus Saturn Wall plate A series, 2 Keys
5084*	C-Bus Saturn Wall plate A series, 4 Keys
5086*	C-Bus Saturn Wall plate A series, 6 Keys
E5082*	C-Bus Saturn Wall plate Eseries, 2 Keys
E5084*	C-Bus Saturn Wall plate E series, 4 Keys
E5086*	C-Bus Saturn Wall plate E series, 6 Keys

* Saturn Wall plates are available with several fascia styles.

For Your Safety

⚠ ⚠ DANGER

HAZARD OF ELECTRIC SHOCK, EXPLOSION, OR ARC FLASH

This product must be installed and serviced by appropriately qualified and/or licensed professional in accordance with the local wiring rules.

- Do not connect the wall plates to mains voltage, the wall plates are only to be connected to the C-Bus network. Isolate the electrical supply before doing any work on the product.
- To comply with all safety standards, the product must be used only for the purpose described in this instruction and must be installed in accordance with the wiring rules and regulation in the location where it is installed. Do not use this product for any other purpose than specified in this instruction.
- Do not attempt to open the product casing or perform any action on the internal components of the product.

Failure to follow these instructions will result in death or serious injury.

⚠ WARNING

INCORRECT C-BUS CABLE CONNECTION

The C-Bus network cabling is classified as Separated Extra-Low Voltage (SELV) wiring. To maintain this requirement, the approved C-Bus cable is used.

- Ensure an adequate separation and/or segregation of the C-Bus cable from other wiring (for example Low Voltage wiring) is maintained throughout the entire installation.
- Ensure the C-Bus network cable is installed in accordance with the SELV wiring rules and regulations of the jurisdiction.

Failure to follow these instructions can result in death, serious injury, or equipment damage.

NOTICE

It is important to select the right location to install the C-Bus Saturn wall plate. Some considerations are listed below:

- For indoor use only.
- Allow adequate ventilation.
- Units may be mounted vertically or horizontally.
- Choose a location free of water, humidity, direct sunlight and heavy dust.
- Do not cover the unit.
- Provide easy access to the unit for switching lights and selecting scenes.
- Locate the wall plates as close as possible to C-Bus power supplies to minimize any voltage drop.

Failure to follow these instructions can result in equipment damage.

NOTICE

MEGGER TESTING

Megger testing must never be performed on any cable while connected to the product as it could degrade the performance of the product and/or the network.

Failure to follow these instructions can result in equipment damage.

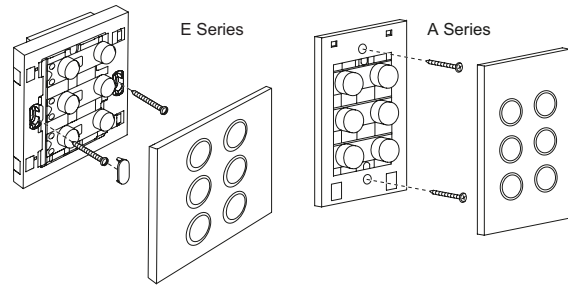
- 1 Package contents**
- A Plate Body
 - B Front Fascia Panel
 - C Screws (2)
 - D Instruction Sheet
- Note:** Wall Box purchased separately.

- 2 C-Bus Network Connection**
- Connection to the C-Bus network is made using an unshielded twisted pair C-Bus Cable.
- Use only C-Bus certified cable, which is identifiable by its pink sheath.
- For C-Bus cable, refer
 - Catalogue number: 5005C305B (solid)
 - Catalogue number: 5005C305BST (stranded)
- Twist or crimp the wire pairs together as illustrated in (a). The method of attachment is illustrated in (b).
- Note:** Do not use soldered connections, as they are not reliable.
- Do not connect C-Bus negative to earth or any other circuit.

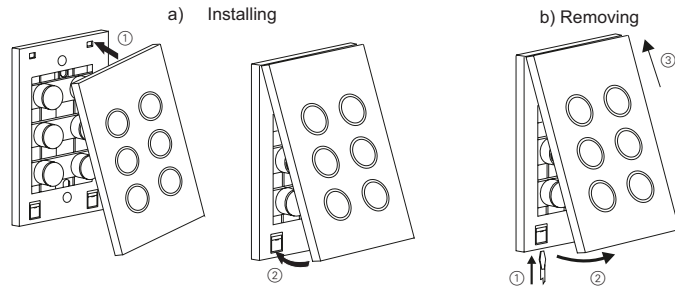


GEX98211

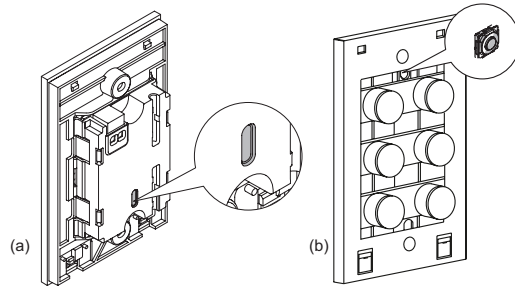
3



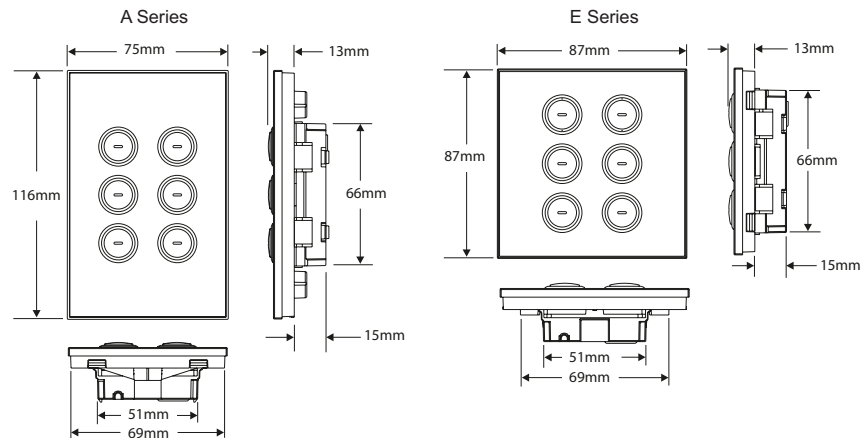
4



5



6



3 Mounting Instructions

'A' Series Spacelogic C-Bus plates fit standard rectangular 84mm centre wall box in which mounting is done.
'E' Series Spacelogic C-Bus wall plates fit standard square 60.3mm centre wall box in which mounting is done.
It is recommended that wall boxes be Earthed.

Note: The Wall Box must be fitted with a minimum distance of 10mm back from the finished surface of the wall. When mounting vertically, fit the grid plate to the wall with the release locks at the bottom.

4 Install Or Remove Fascia

a) Installing the 'A' or 'E' Fascia

Each fascia has 4 mounting clips.

Note: Be careful not to damage the clips as this will cause a poor fit on the plate body.

Each fascia has an UP arrow at the back for the proper placement of the plate over the corresponding switch mechanism.

To install the 'A' Series fascia, the fascia is held in place by two release latches at the BOTTOM of the plate body.

- (1) Fit the upper clips into the apertures at the top of the grid plate (upper clips are longer than lower clips).
- (2) Lower the bottom of the fascia to the grid, until the clips engage.

To install the 'E' Series fascia, the fascia is held in place by the four release latches on the SIDES of the plate body.

b) Removing the 'A' or 'E' Series Fascia

To remove the fascia, support the plate body to prevent damage.

On the 'A' Series plate,

- (1) Using a small screwdriver, push upward on each of the release latches to engage the lower mounting clips.
- (2) Swing the lower end of the fascia about 5mm away from the grid, until it is free.
- (3) Push the fascia upward and pull gently to release the upper clips.

On the 'E' Series plate, using a small screwdriver push sideways on each of the release latches to engage the 4 mounting clips.

Configuration and Commissioning



Configuration and Commissioning of the unit is done by the C-Bus connection using the "SpaceLogic C-Bus Commission" software which can be downloaded from the URL: <http://www.se.com>

The unit can be powered by the USB Type C connection to perform the configuration prior to the installation.

5 Firmware Update

The SpaceLogic C-Bus Commission software will notify if a firmware update is required. The update requires a connection to the USB Type C connector (a) at the back of the wall plate and is performed using the SpaceLogic C-Bus Commission software. All required firmware files will be included and authenticated as part of the latest SpaceLogic C-Bus Commission software release. Reset button (b) is provided for recovery purposes only. Do not press unless instructed.

6 Specifications

Parameter	'A' Series	'E' Series
Dimensions (WxHxD)	75x118x25mm	87x87x25mm
Protrusion From Wall	10mm	10mm
Weight	54g	39g
Mounting Centres	84mm	60.3mm
Base Depth (into wall)	15mm	15mm
C-Bus Supply Voltage	20 to 36V d.c. C-Bus Current Consumption 22 mA	
Control Functions	Load switching, dimming, timers, scene control	
Status Indicators	User configurable RGB	
C-Bus Connection	One terminal block to accommodate 0.2 mm ² to 1.3 mm ² (24 to 16 AWG)	
Operating Temperature Range	0 to 45°C	
Operating Humidity Range	10 to 95%, non-condensing	
Product Compliance	UK CA  	

Schneider Electric Industries SAS

If you have technical questions, contact the Customer Care Centre in your country.
se.com/contact.

Warranty

For Warranty information and service, visit se.com/contact.

Declaration

This product is in compliance with the applicable directive and standards. Declarations of conformity can be downloaded on: se.com/docs.